



Fast
renovation

R-Tile

Gerflor®

R-Tile

designed for durability and fast installation



Performance

- Withstand Mechanical traffic
- 10 colors available in 5 mm, 7 mm, 9 mm: for versatile applications



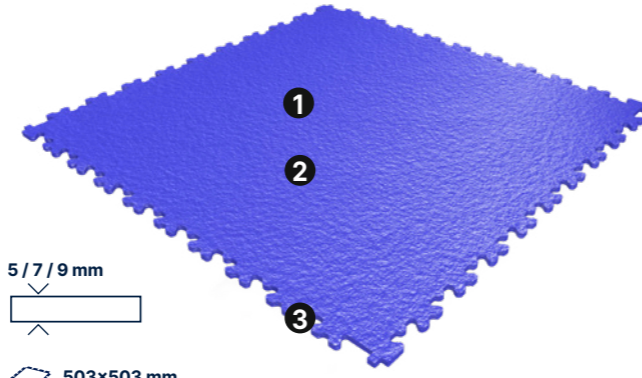
Easy Installation

- Adhesive Free Interlocking system: Easy to remove and reuse
- Minimal subfloor preparation: easy to install



Safety & Well being

- R10 Slip resistance
- Walking comfort

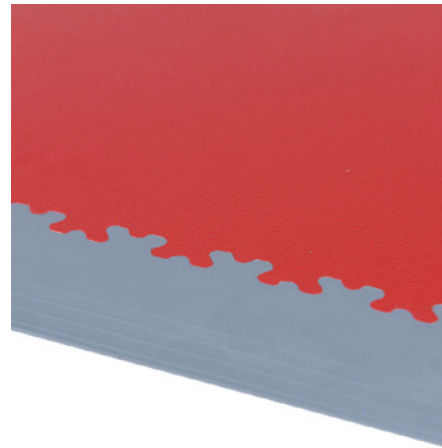


1. Textured emboss: anti slip properties

2. Made from hardwearing material available in various thickness

3. Dovetail interlocking system

Do not forget the finishes!



Access & corner
All colours for all thicknesses are available



Anti Bounce Mallet
5951



Entrance mat
1700 - Esplanade 9000

Renovation solution

across various commercial & industrial applications



R-Tile 5 mm: light commercial



R-Tile 7 mm: factory and warehouse



R-Tile 9 mm: industrial applications

we care / we act



Recycling
100% recyclable
Up to 80% recycled content



Indoor Air Quality
TVOC < 100 micrograms / m³
No Formaldehyde

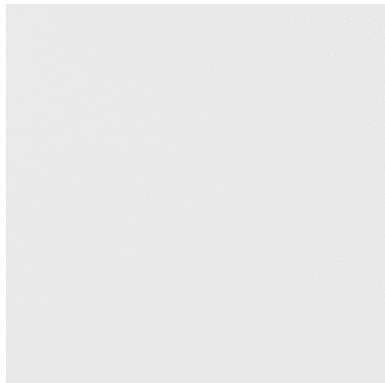


Reach
100% REACH compliant
Phthalate Free (except recycled content)
FREE of heavy metals
FREE of solvent

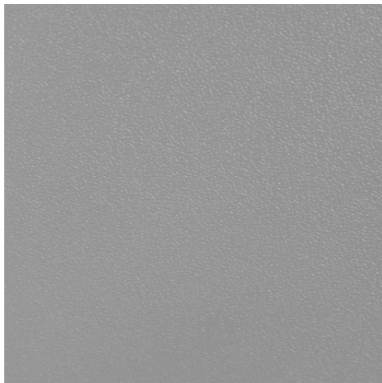


R-Tile colours

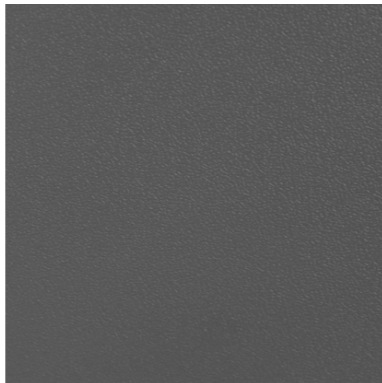
 503 x 503 mm



9003 White



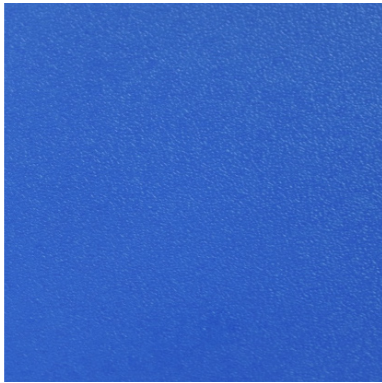
7045 Light Grey



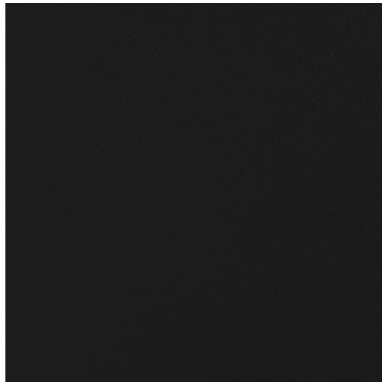
7015 Dark Grey



3016 Maroon



5005 Blue



9004 Black



3020 Red



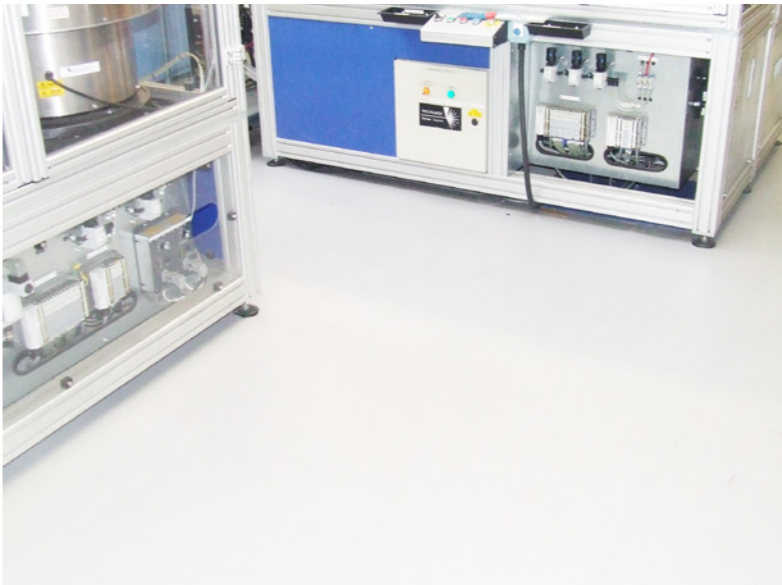
1002 Beige



1018 Yellow



6005 Green



9003 White



9003 White / 7045 Light Grey



5005 Blue



7015 Dark Grey



7045 Light Grey / 9004 Black / 1018 Yellow

R-Tile

Description

Total Thickness	EN ISO 24346	mm	5	7	9
Thickness of the wearlayer	EN ISO 24340	mm		-	
Weight	EN ISO 23997	g/m ²	7000	9200	12800
Size	EN ISO 24342	mm		503 × 503	
Number of planks per box / sqm per box	-	-	10 / 2.53 sqm	8 / 2.02 sqm	6 / 1.52 sqm

Classification

Norm/Product Specification	-	-	EN ISO 10581		
European Classification	EN ISO 10874	Class	34-43		
Fire Rating	EN 13501-1	Class	Bfl-s1		
Static Electrical Propensity	EN 1815	kV	< 2		
Slip Resistance Wet	EN 16165 app.B (DIN 51 130)	Class	R10		

Performances

Wear Resistance	EN 660.2	mm ³	≤ 2.0		
Type Binder content	ISO 10581	group	I		
Curling	EN ISO 23999	mm	≤ 1		
Dimensional stability (norm)	EN ISO 23999	%	≤ 0.25		
Residual Indentation	EN ISO 24343-1	mm	≤ 0.10		
Castor chair test	ISO 4918	-	OK		
Flexibility	ISO 24344 method A	-	No cracking		
Shore hardness	EN ISO 868	H _D	≥ 40		
Thermal Conductivity	EN ISO 10456	W/(m.k)	0.25		
Colour Fastness	EN ISO 105-B02	degree	≥ 6		
Chemical Products Resistance	EN ISO 26987	-	OK		

Environment/Indoor Air Quality

TVOC after 28 days	ISO 16000-6	micrograms/m ³	<100		
--------------------	-------------	---------------------------	------	--	--

CE Marking



EN 14041



The information contained in this document is valid from 01/03/2024 and is subject to change at any time without notice. In the context of constantly changing technology, our customers are responsible, prior to any use, for checking with us that this document is the version in force. Rubber leaves indelible stains on vinyl floorings: do not use mats with rubber backing and replace tubular furniture feet with those made of PVC or polyamide. Place mats of sufficient length at entrances to reduce outside sources of dirt.

We care / we act Our Commitments for a Sustainable future



CARBON FOOTPRINT*
-20 % kg
CO₂ equivalent/m²
between 2020 and 2025



BIOSOURCED CONTENT**
10 % by 2025



RECYCLED CONTENT
30 % by 2025



ADHESIVE FREE***
35 % by 2025



ANNUAL VOLUME RECYCLED
60 000 t by 2025

* Scopes 1 and 2 defined in the GHG protocol ** % of activity with biosourced materials *** % of activity - adhesive free solution